



# SWISSPEARL ARCHITECTURE 20

International Edition – High Profile Buildings

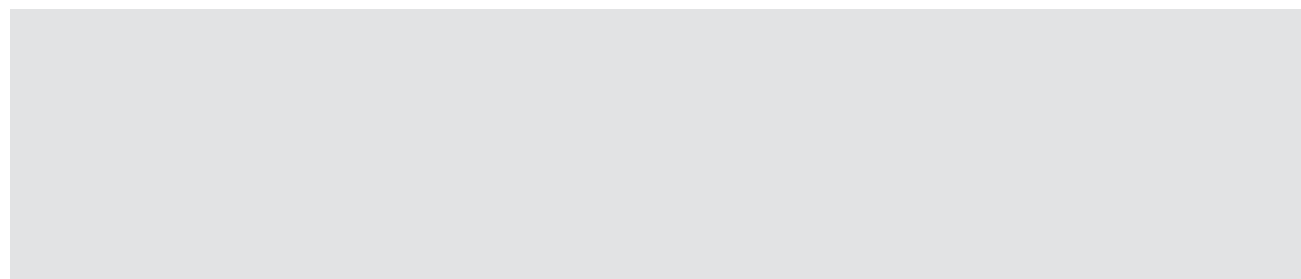
swiss  
pearl®

This house allows the family to spill out from the open-plan dining and living area onto the outdoor patio and pool area, creating a cool place to take shelter in a hot climate.

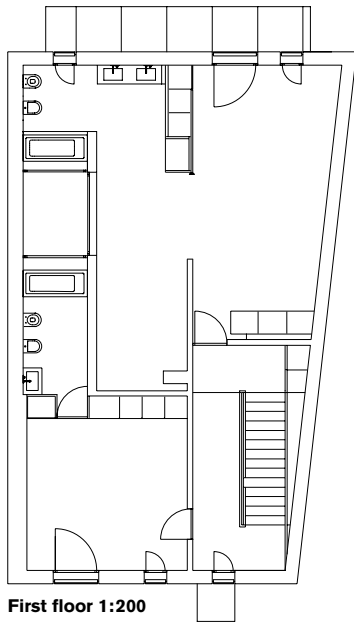


Single-family House, Parede near Lisbon, Portugal

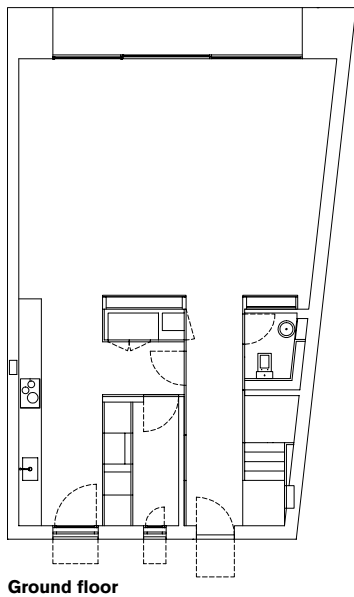
**LIGHT, BRIGHT, WHITE**



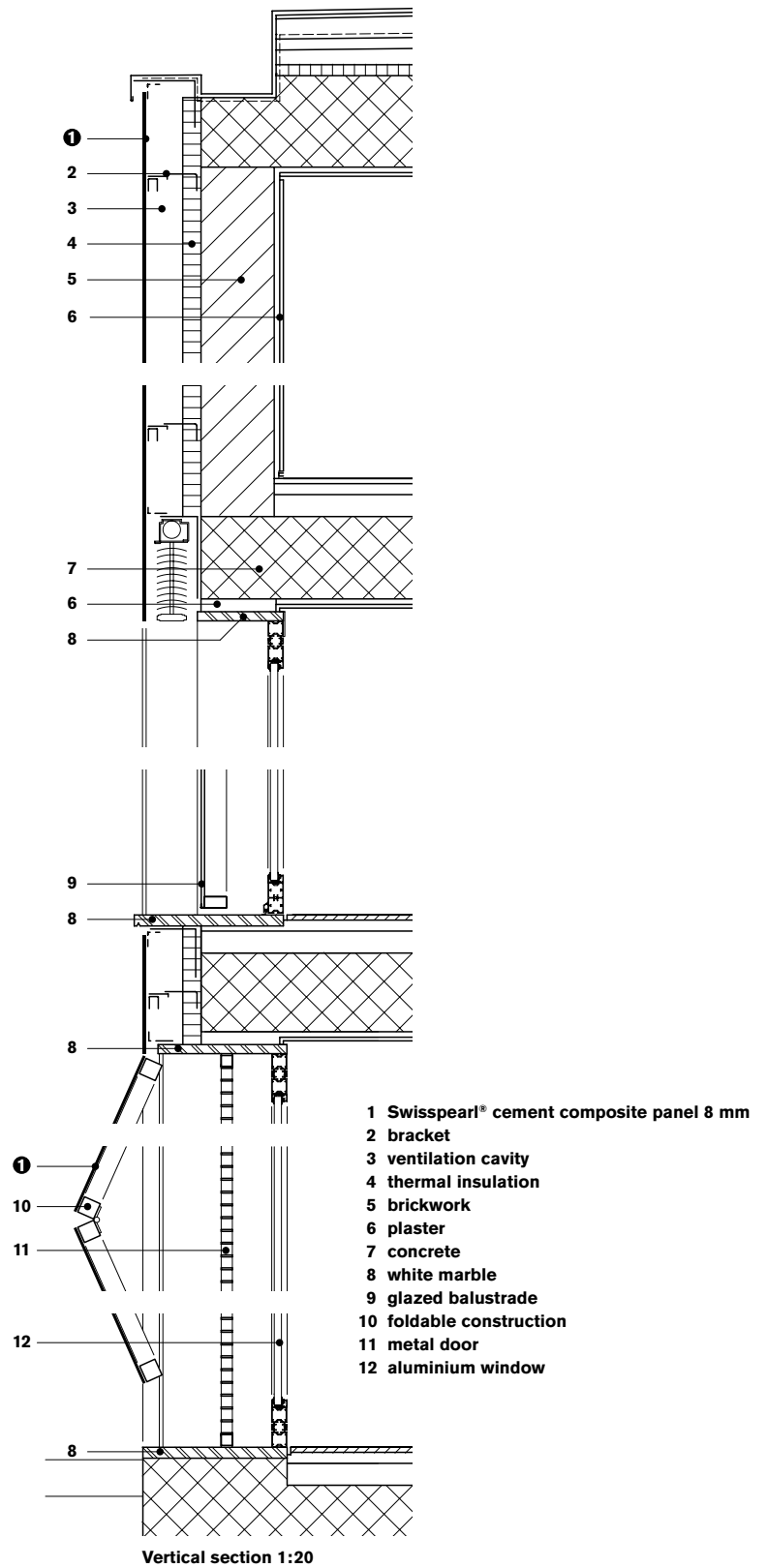




First floor 1:200



Ground floor



Vertical section 1:20

**“WE BELIEVE THAT THE NEW CONSTRUCTION SHOULD BE MARKED OUT WITH THE ALIGNMENTS OF THE ADJACENT HOUSE, NAMELY THE BUILDING’S HEIGHT, VOLUMETRY AND THE FLOOR LEVELS OF THE MAIN FAÇADE.” HUMBERTO CONDE**



This elegant, triple-storey, single-family house located near Lisbon in Portugal sits on an elongated, wedge-shaped site that fans open to the outdoor spaces drawn out to the west. The site is subdivided into four distinct zones: the arrival and parking area, the house itself, the outdoor patio with swimming pool and finally, the garden at the back of the site.

The play of vertical, floor-to-ceiling openings in the façade and clean, white cladding creates an appealing aesthetic. Vertical concertina shutters close off the ground floor façade, making it impenetrable; a clever tactic that provides both privacy and security. White Swisspearl cement composite panels correspond to the three floor levels, allowing one to read the floor slab levels behind the elevations. The vertical accent of the single, delicate tree, together with the protruding canopy

above the entry door demarcates a covered entry zone in front of the main entrance.

Although the architecture of the house contrasts with the surrounding houses, the fact that it responds to the height lines of the neighbouring house to the south, corresponding to the lines of the eaves and floor levels, ties it into its surroundings. The layout of the house is clear and logical with the communal zones – kitchen, living and dining – situated on the ground level, and the bedrooms on the upper two floors. Working one's way up from the ground floor: the open-plan dining and living room is a sizeable open plan space of 52 m<sup>2</sup> that can be furnished in a variety of ways. Large, sliding doors allow the space to extend outdoors to the covered patio and pool, merging indoors and outdoors.



**Vertical concertina shutters, enable the ground floor façade to be shut off from the street.**



The bright stairwell, which has two elongated openings, is like a light well, vertically slicing through the building. An interesting feature in this tall space is the window openings cut into the internal façade that overlooks the stairwell, creating unusual diagonal internal views into the bedroom and intricate light reflections, although perhaps foregoing a level of privacy. Ascending to the first floor that accommodates two bedrooms, the larger, elongated room is used as a study space, while the other smaller square room is a child's room. Each room has its own sleek, white en-suite bathroom. A generous walk-in cupboard and courtyard mini-garden, containing a single, bonsai-like tree, give these spaces a special quality. There is an interesting flow of space between the rooms.

The main bedroom crowns the house and forms the 'penthouse' on the uppermost floor. This volume has been clad in large-format grey Swisspearl cement composite panels that double as shutters on the double-door openings. When the shutters are closed, the volume reads like a pure abstract volume. This upper level is set back, thereby reducing the scale of the house on the garden side. The L-shaped main bedroom has an en-suite bathroom tucked into the corner junction with its own door opening onto the broad terrace that overlooks the pool and garden below. Overall, this is a light, spacious house devoid of clutter and bathed in masses of natural light. *Anna Roos*



**“THE BUILDING SHOULD PROMOTE A DIALOGUE BETWEEN THE SURROUNDING AREA WITH A LANGUAGE OF CONTRAST IN ITS IMAGE AND SHAPE.” HUMBERTO CONDE**

**Location** Rua 31 Janeiro, 11, Parede, Portugal

**Client and architect** Humberto Conde, Lisbon, Portugal

**Building period** 2007 – 2013

**General contractor** HRA-Lisboa, Humberto Conde, Lisbon, Portugal

**Façade construction** Stonarte Lda., Vila Nova de Gaia, Portugal, Portugal

**Façade material** SWISSPEARL® CARAT, Onyx 7099 and Sapphire 7060