



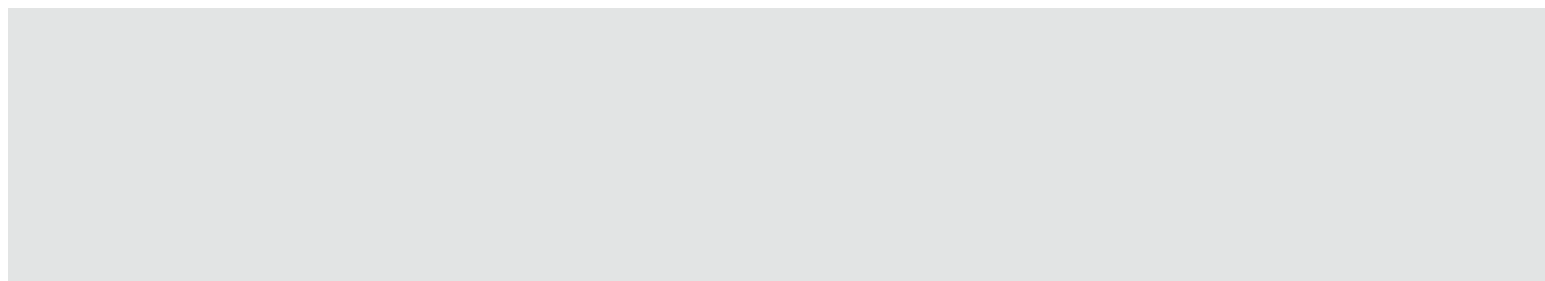
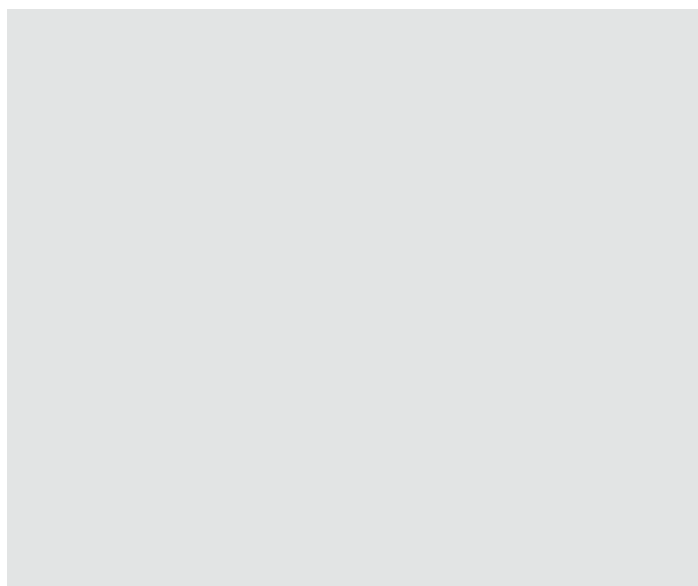
SWISSPEARL ARCHITECTURE 3

International Edition – High Profile Buildings

The fashionable suburb on the coast of Lisbon is the scene of a new ensemble of apartments and business premises. Whereas the two parts of the building are distinguished from one another by their colours, they are united by a monotone joint base floor in a different shade. The architects worked with various nuances of colour and clear volumes, resulting in an impression of unity in diversity.

Residential and Business Building, Estoril, Portugal

VOLUMETRIC VIRTUOSITY







The two sections of the building are distinguished by red and pale grey, held together by the base floor clad in opal black. The upper end of the building, clad in titanium zinc, creates an additional material and colour nuance.

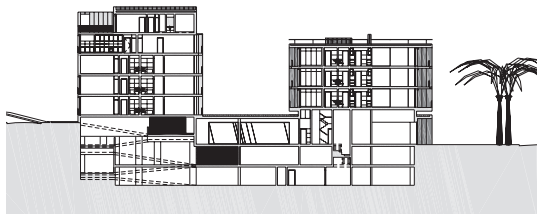
Estoril is probably one of Portugal's most important seaside resorts. From an architectural point of view, the noble suburb of Lisbon offers a large number of villas from the 1930s and a well-preserved, picturesque Old Town. Not far from the Old Town, on the Avenida Aida, the Lisbon architectural firm HRA constructed a residential and business building featuring virtuoso volumetry and playfully colourful façades.

The visitor enters the L-shaped ensemble of buildings via a kind of inner courtyard bordered on the one hand by the unifying base and on the other by an existing concrete outer wall. In order to mark the uninterrupted base and isolate it from the rest of the highrise building, the entrance floor is clad with the façade element Swisspearl Carat in opal black extending up to and including the ceiling slab. The façade cladding panels of the base, which are darker and larger than the other façade panels, add visual

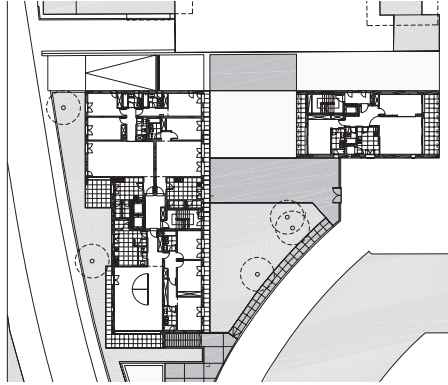
importance. The entrance gate is equipped with the same panelling, thus providing a smooth transition between the concrete wall and the façade.

The two upper floor volumes, which are set at right angles to each other, relate to the base floor in completely different ways. Whereas one of them joins with it in a lighter shade of grey (sapphire), the red clad volume stands out from it as an independent cube. The break is further accentuated by a setback façade detail in the intermediate area. The compact, autonomous expression of the cube results on the one hand from the identical treatment of the cladding of the first floor ceiling slab, roof and north and south façades, on the other from its strict east-west orientation.

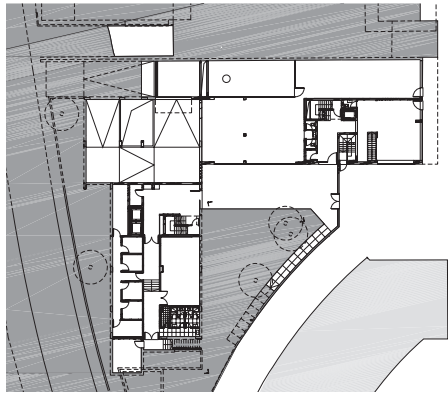
The larger volume, clad in sapphire grey, features different themes of façade design, whereby the blurring of the effect of the material and the unfailingly flush outer



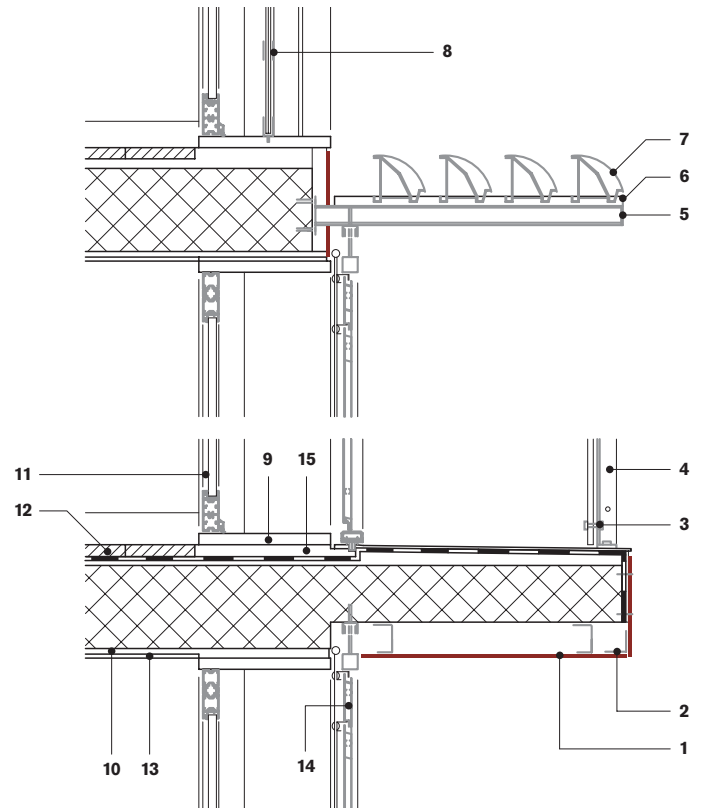
Section 1:1000



Upper floor 1:1000



Ground floor 1:1000



Vertical section 1:20

skin are important elements. This can be seen not only in the base area, but also in the transition of the façade on the attic floor. The second attic floor is clad in titanium zinc, analogous to the chimneys and ventilation superstructures. The difference between the pale grey Carat slab and the titanium zinc is barely noticeable except when the sun shines on them at an angle. Unlike the red volume, the balcony zones here are placed in front of the actual façade. The glazed parapet nevertheless opens up onto a view of the rear level. The windows and shutters comply with the slender dimensions of the façade panels and fit in with the general picture without a transition.

This project by the architects of the HRA firm shows how an interesting element of tension can be achieved with different façade designs without the whole ensemble falling apart. The nuances offer variety, and the constant use of the same material provides unity. *Anita Simeon*

Location Avenida Aida 153, Estoril, Portugal

Client Parque Urbano SA, Estoril

Architects HRA Arquitectos, Lisbon; Humberto Conde

Collaborators Paulo Figueiredo, Helena Ramos, Leopoldo Calhau

Building period 2001–2005

Façade construction Urbecaste SA, Cascais

Façade material Swisspearl® Carat, Coral (Ruby) 7030, Black Opal (Anthracite) 7020, Sapphire (Titanium) 7060

- 1 Swisspearl® cement composite panel
- 2 Aluminium corner profile
- 3 Glass banister infill, partially fixed onto T-profiles
- 4 Flat steel handrail 10 mm
- 5 Sun screen bearer profile 50×50 mm
- 6 Sun screen ornamental profile 26×16 mm
- 7 Sun screen lamella
- 8 Glass banister infill, partially fixed onto quarry stone frames
- 9 Quarry tiles 30 mm
- 10 Interior plaster
- 11 Aluminium window, anodised surface, natural colour
- 12 Glued wood lining in the attic
- 13 Sprayed-on sculptor's plaster
- 14 Sliding shutters as aluminium sun screen lamella, anodised surface, natural colour
- 15 Mortar base